



BEETLEJUICE

The Musical. The Musical. The Musical.



BROADWAY  NORFOLK

 A NEDERLANDER PRESENTATION

CHRYSLER HALL

FROM HERE, GO ➡ **ANYWHERE** **AT TIDEWATER COMMUNITY COLLEGE**



TCC's new 37,000 square foot
VISUAL ARTS & DESIGN CENTER
inspires new creative collaborations
in education and cultural exploration.
With smaller class sizes, guaranteed
transfer to Virginia's best universities,
and substantial cost savings over
4-year schools, TCC is here to help
you discover what's next.

Learn more at [TCC.EDU](https://www.tcc.edu).



TIDEWATER COMMUNITY COLLEGE
VISUAL ARTS & DESIGN CENTER

WARNER BROS. THEATRE VENTURES NETWORKS PRESENTATIONS
LANGLEY PARK PRODUCTIONS JEFFREY RICHARDS STEVE TRAXLER
REBECCA GOLD JAMES L. NEDERLANDER WARNER/CHAPPELL MUSIC INC.

In association with

deROY FEDERMAN PRODUCTIONS/42ND.CLUB MARY LU ROFFE MARC BELL & JEFF HOLLANDER
THE JOHN GORE ORGANIZATION RUTH & STEVE HENDEL
GABRIELLE PALITZ PIERCE FRIEDMAN PRODUCTIONS

present

BEETLEJUICE

Music & Lyrics By

EDDIE PERFECT

Book By

SCOTT BROWN & ANTHONY KING

Based on the GEFLEN COMPANY PICTURE, with a story by MICHAEL MCDOWELL & LARRY WILSON

JUSTIN COLLETTE ISABELLA ESLER

MEGAN MCGINNIS WILL BURTON JESSE SHARP SARAH LITZINGER

JACKERA DAVIS VERONICA FIAONI ABE GOLDFARB KRIS ROBERTS BRIAN VAUGHN
MICHAEL BIREN RYAN BRESLIN HALEY FISH HALEY HANNAH MATTHEW MICHAEL JANISSE
ERIC ANTHONY JOHNSON KENWAY HON WAI K. KUA KATIE LOMBARDO MATEO MELENDEZ
DREW MINARD LEE N PRICE NEVADA RILEY LEXIE DORSETT SHARP CORBEN WILLIAMS

Scenic Design

DAVID KORINS

Costume Design

WILLIAM IVEY LONG

Lighting Design

KENNETH POSNER

Sound Design

PETER HYLENSKI

Projection Design

PETER NIGRINI

Puppet Design

MICHAEL CURRY

Special Effects Design

JEREMY CHERNICK

Magic & Illusion Design

MICHAEL WEBER

Hair & Wig Design

CHARLES G. LaPOINTE

Make-Up Design

JOE DULUDE II

Additional Arrangements

EDDIE PERFECT
KRIS KUKUL

Dance Arrangements

DAVID DABBON

Music Producer

MATT STINE

Music Director/Conductor

ANDY GROBENGIESER

Music Coordinator

KRISTY NORTER

Physical Movement Coordinator

LORENZO PISONI

Associate Director

CATIE DAVIS

Associate Choreographer

MICHAEL FATICA

Production Stage Manager

ALAN D. KNIGHT

Company Manager

JOEL T. HERBST

Tour Marketing & Press

ALLIED GLOBAL MARKETING

Digital & Social Media

SPOTCO

Casting

THE TELSEY OFFICE
RACHEL HOFFMAN, CSA
RASHAD NAYLOR

Exclusive Tour Direction

THE ROAD COMPANY

General Management

GENTRY & ASSOCIATES
GREGORY VANDER PLOEG

Line Producer

JENNY GERSTEN

Production Management

NETWORKS PRESENTATIONS
WALKER WHITE

Executive Producers

WARNER BROS. THEATRE VENTURES
MARK KAUFMAN & KEVIN McCORMICK

Executive Producers

NETWORKS PRESENTATIONS
MIMI INTAGLIATA

Musical Supervision, Orchestration & Incidental Music

KRIS KUKUL

Choreographed By

CONNOR GALLAGHER

Directed By

ALEX TIMBERS

BROADWAY★IN NORFOLK

N A NEDERLANDER PRESENTATION

CAST

Beetlejuice	JUSTIN COLLETTE
Lydia	ISABELLA ESLER
Barbara	MEGAN MCGINNIS
Adam	WILL BURTON
Charles	JESSE SHARP
Delia	SARAH LITZSINGER
Priest	ABE GOLDFARB
Movers	ABE GOLDFARB, LEE N PRICE
Maxine Dean	KRIS ROBERTS
Maxie Dean	BRIAN VAUGHN
Otho	ABE GOLDFARB
Girl Scout	JACKERA DAVIS
Miss Argentina	VERONICA FIAONI
Census Taker	ABE GOLDFARB
Neighbors	LEE N PRICE, KRIS ROBERTS, BRIAN VAUGHN
Juno	KRIS ROBERTS
Ensemble	MICHAEL BIREN, JACKERA DAVIS, VERONICA FIAONI, HALEY FISH, ABE GOLDFARB, KENWAY HON WAI K. KUA, MATEO MELENDEZ, DREW MINARD, LEE N PRICE, NEVADA RILEY, KRIS ROBERTS, BRIAN VAUGHN, CORBEN WILLIAMS

UNDERSTUDIES

Understudies never substitute for the listed performers unless
a specific announcement is made at the time of the appearance.

For Beetlejuice—MICHAEL BIREN, MATTHEW MICHAEL JANISSE, LEE N PRICE;
for Lydia—JACKERA DAVIS, NEVADA RILEY;

for Barbara—HALEY FISH, HALEY HANNAH, LEXIE DORSETT SHARP;
for Adam—RYAN BRESLIN, ABE GOLDFARB, MATTHEW MICHAEL JANISSE;
for Delia—HALEY FISH, KRIS ROBERTS, LEXIE DORSETT SHARP;

for Charles—ABE GOLDFARB, MATTHEW MICHAEL JANISSE, BRIAN VAUGHN;
for Otho—MICHAEL BIREN, RYAN BRESLIN, MATTHEW MICHAEL JANISSE, LEE N PRICE;
for Maxie Dean—MICHAEL BIREN, RYAN BRESLIN, ABE GOLDFARB, MATTHEW MICHAEL JANISSE;

for Maxine Dean—HALEY HANNAH, LEXIE DORSETT SHARP;
for Juno—HALEY HANNAH, LEXIE DORSETT SHARP;
for Girl Scout—HALEY HANNAH, NEVADA RILEY;
for Miss Argentina—HALEY FISH, LEXIE DORSETT SHARP, NEVADA RILEY.

DANCE CAPTAIN: RYAN BRESLIN

ASSISTANT DANCE CAPTAIN: HALEY HANNAH

SWINGS

RYAN BRESLIN, HALEY HANNAH,
MATTHEW MICHAEL JANISSE, LEXIE DORSETT SHARP

VACATION SWINGS

ERIC ANTHONY JOHNSON, KATIE LOMBARDO

THERE WILL BE ONE 15-MINUTE INTERMISSION.

TO VIEW THE CAST LIST FOR THIS PERFORMANCE, SCAN THE QR CODE BELOW:



Music Producer—MATT STINE
Music Supervisor—KRIS KUKUL
Music Director/Conductor, Keyboard—ANDY GROBENGIESER
Assistant Conductor/Keyboard—JULIA SUNAY
Reeds—CLAYTON WILLIAMS; Trumpet—ROB SLOWIK; Trombone—JIM LUTZ; Bass—MARK
ZIEGLER; Guitars—STEPHEN FLAKUS, MIKE FREDERICK;
Drums—TOM JORGENSEN; Violin—MICHALIS KOUTSOUPIDES.
Keyboard and Synthesizer Programmer: Midiomatic, LLC/Taylor Williams
Music Copying: Emily Grishman Music Preparation
Music Coordinator: Kristy Norter

We want to thank Tim Burton for his imagination, which has inspired us all throughout our many years working on this show. We are grateful that he cleared a path for us to play in the extraordinary world of his creation.

—With much love and appreciation,
the Cast and Creative Team of Beetlejuice

WHO'S WHO IN THE CAST



Justin
Collette



Isabella
Esler



Megan
McGinnis



Will
Burton



Jesse
Sharp



Sarah
Litzsinger



The use of any recording device, either audio or video, and the taking of photographs, either with or without flash, is strictly prohibited.

WHO'S WHO IN THE CAST



Jackera
Davis



Veronica
Fiaoni



Abe
Goldfarb



Kris
Roberts



Brian
Vaughn



Michael
Biren



Ryan
Breslin



Haley
Fish



Haley
Hannah



Matthew Michael
Janisse



Eric Anthony
Johnson



Kenway Hon Wai K.
Kua



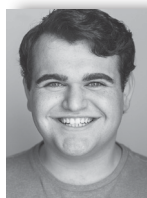
Katie
Lombardo



Mateo
Melendez



Drew
Minard



Lee N
Price



Nevada
Riley



Lexie Dorsett
Sharp

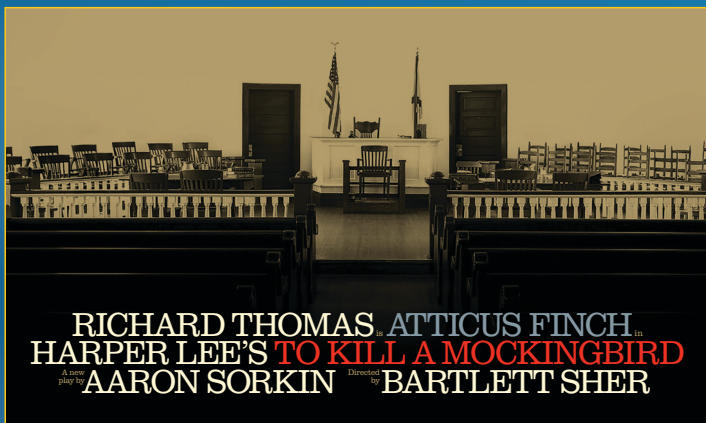


CorBen
Williams

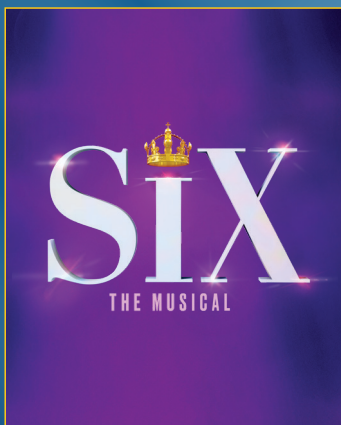
BROADWAY NORFOLK

A NEDERLANDER PRESENTATION

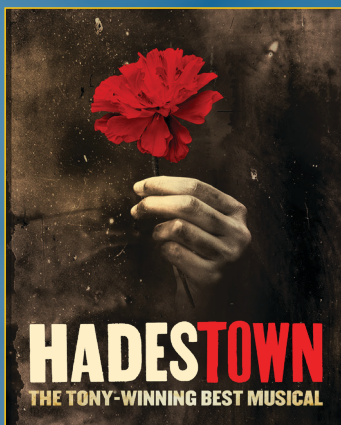
TICKETS ON SALE NOW



JAN. 30-FEB. 4, 2024



FEB. 27-MAR. 3, 2024



MAR. 26-31, 2024

BROADWAYINNORFOLK.COM

CHRYSLER HALL | 

WHO'S WHO IN THE CAST

JUSTIN COLLETTE (*Beetlejuice*) is an award-winning actor, writer and musician. Broadway: *School of Rock* (Dewey Finn). Regional: *Rock of Ages* (Lonny). Netflix: *Cupcake and Dino: General Services* (Cupcake, NYT Best New Shows 2018). He's spent years performing sketch/improv at major comedy festivals and has written/voiced several cartoon shorts for *Bite on Mondo*, racking up millions of views on YouTube. He's very happy you're here and hopes you leave feeling a little more seen and a little less alone. @sorryitsjustin

ISABELLA ESLER (*Lydia*) is incredibly excited to be making her professional debut! She recently graduated high school in San Jose, CA and grew up in the Bay Area. Many thanks to Telsey Office, the *Beetlejuice* team, family, and friends. Extra love to mom and dad! @Isabella.esler

MEGAN MCGINNIS (*Barbara*). Broadway: *Side Show* (revival), *Les Misérables* (revival, Eponine), *Little Women* (Beth), *Beauty and the Beast* (Belle), *Thoroughly Modern Millie*, *Parade*, *The Diary of Anne Frank*. National Tours: *Come From Away*. Off-Broadway and London: *Daddy Long Legs* (available on Broadway HD). TV/ Film: "Marvelous Mrs. Maisel," "Younger," A Goofy Movie, and more. Recordings: Sutton Foster's *Wish* ("Flight") and *Take Me to the World*. Graduate Columbia University, faculty at Ball State University. Most proud of my son, Beckett.

WILL BURTON (*Adam*) is thrilled to be here in.... your town with this incredible company! Broadway: *Hello, Dolly!* (Ambrose); *Kiss Me, Kate!* (Gremio); *Holiday Inn*; *An American in Paris*. Off-Broadway: *Between the Lines* (Frump/Ryan). Other: *Young Frankenstein* (Igor), *Ogunquit*; *Last Days of Summer* (Stuke), *George Street*; *Holiday Inn* (Ted), *The Marriott Lincolnshire*; *The Music Man* (Tommy), *Arena Stage*; *An American in Paris*, Théâtre du Châtelet. TV: "The Blacklist." Thanks to Mama, Daddy, Callen, Haley, all of my teachers, and my incredible reps at KMR! @willburtonum

JESSE SHARP (*Charles*). Tour: *The Addams Family* (Gomez), *Elf* (Walter), *Grease* (Vince Fontaine). Regional: Goodspeed Operahouse, Utah Shakespeare Festival, North-shore Music Theatre, Engeman, Cape Playhouse, The Rev, Theatre by the Sea, The Little Theatre on the Square, Denver's Lone Tree Arts Center, Human Race Theatre, Antaeus. Film/TV: "The Marvelous Mrs. Maisel," "Gilded Age," "Blacklist," "Blue Bloods," "Almost Family," "City on a Hill," "General Hospital," and "Mobland". Training: MFA-UC Irvine, BA-UCLA. Love & endless gratitude to my Lexie & our buddy Chip. @mrjessesharp

SARAH LITZINGER (*Delia*). Broadway: *Beauty and The Beast* (Belle), *Oliver!* with Patti Lupone (Bet), *Amour* (Madeleine), *Les Misérables*, *Marilyn: An American Fable*. National Tours: *Evita* (Eva Peron), *Joseph and*

the Amazing Technicolor Dreamcoat with Donny Osmond (The Narrator). Favorite roles: *Little Shop* (Audrey), Broadway at Music Circus; *Next To Normal* (Diana), *Assassins* (Squeaky), Milwaukee Rep; *South Pacific* (Nellie), DTC; *Tick, Tick... Boom!* (Susan), George St. Playhouse; *Peter Pan* (Peter), Alabama Shakespeare Fest.

JACKERA DAVIS (*Girl Scout, Ensemble, u/s Lydia*) is a recent grad of Sam Houston State University with a BFA in Musical Theatre! She is ecstatic to be making her national tour debut! Huge shoutout to her family, BFFs, The Collective, the LINK Program, and God! @jjackera

VERONICA FIAONI (*Miss Argentina, Ensemble*). Tours: *West Side Story*, *A Chorus Line* (Maggie). Regional: *Chicago* (Muny), *Jerome Robbins' Broadway* (TUTS), *Anne of Green Gables* (Goodspeed). TV: "American Horror Stories" and "Law & Order". Much love and thanks to her family, Dino, CESD & Telsey. @vernymv

ABE GOLDFARB (*Otho, Ensemble, u/s Adam, u/s Charles, u/s Maxie Dean*) is an actor, writer and director based in Brooklyn, NY. He's been on Broadway (in *Beetlejuice*), he's voiced Pokémon (several), and he's emceed burlesque shows all over the world (seriously). Deepest love to Mom and Rosebud.

KRIS ROBERTS (*Maxine Dean, Juno, Ensemble, u/s Delia*). Broadway: *Beautiful: The Carole King Musical*. Off-Broadway: *Little Shop of Horrors* (OOBRC). Tours: *Beautiful*, *Fame the Musical* (Carmen). Regional: *Footloose* (Rusty), *Once on This Island* (Ti Moune). NYU/Tisch Alum. Thanks to The Mine, Catie, Rashad/Telsey & Mom. Jer 29:11 www.krisroberts.net @krisroberts22

BRIAN VAUGHN (*Maxie Dean, Ensemble, u/s Charles*). Regional: Denver Center, Chicago Shakespeare, Milwaukee Rep, Utah Shakespeare (*Hamlet*, *Iago*, *Cyrano*, *Harold Hill*, *Javert*), South Coast Rep *She Loves Me* (Georg), Arizona Theatre Company, PCPA, Northlight. Thanks @Hudson Artists. Love to Addie, Scarlett, and Emma. brianvaughnofficial.com, @brianvaughn11

MICHAEL BIREN (*Ensemble, u/s Beetlejuice, u/s Otho, u/s Maxie Dean*) is thrilled to be on tour with *Beetlejuice*! New York: *Crazy for You* (Lincoln Center), *Revolution in the Elbow* (Minetta Lane). Tours: *My Fair Lady*, *Billy Elliot*, *Cinderella* (with Lea Salonga). Regional: Papermill, Goodspeed, Fulton, MSMT, MUNY, Riverside, Ogunquit. Love to DMRSCSF+B.

RYAN BRESLIN (*Swing, Dance Captain, u/s Adam, u/s Otho, u/s Maxie Dean*). Broadway: *Newsies* OBC (Racetrack), *Beetlejuice* OBC, *Charlie and the Chocolate Factory* OBC, *The Book of Mormon*. TV/Film: "Person of Interest" (CBS), *Hail, Caesar!* (Feature Film).

HALEY FISH (*Ensemble, u/s Barbara, u/s Delia, u/s Miss Argentina*). Broadway: *CATS* (Rumpelteezer); *Hello, Dolly!*; *Kiss Me, Kate*; *The*

WHO'S WHO IN THE COMPANY

Music Man; *New York, New York*. Off Broadway: *Only Gold, Mack & Mabel*. TV: "Fosse/Verdon" on FX. Regional: *Chicago* (Velma Kelly), *The Lex*. BFA NYU '17. @oh_hayfish

HALEY HANNAH (*Swing, Assistant Dance Captain, u/s Barbara, u/s Maxine Dean, u/s Juno, u/s Girl Scout*) (she/her). Broadway: *Bring It On OBC* (u/s Campbell/Eva). National Tours: *A Bronx Tale* (ADC, u/s Rosina), *Summer: The Donna Summer Musical* (Swing), *Flashdance* (u/s Alex). TV: back-up singer Demi Lovato/Jonas Brothers (ABC). BFA University of Michigan. @haleyhannah25, www.haleyhannah.com. Love to Joey!

MATTHEW MICHAEL JANISSE (*Swing, u/s Beetlejuice, u/s Adam, u/s Charles, u/s Otho, u/s Maxine Dean*) is Thrilled Thrilled Thrilled to be a part of this ghoulish company. Off Broadway: *Kinky Boots*. National Tour: *Something Rotten!*, *Cabaret*, *Mamma Mia!* Regional Theatre: Fulton, VSC, Arsht Center. Thanks to Nicole, Catie, Avalon, DDO, my family, and Carolyn! @matthewnofilter

ERIC ANTHONY JOHNSON (*Vacation Swing*). Broadway/National Tours: *Beetlejuice* (OBC), *R+H Cinderella*, *Evita*, *Elf*, *West Side Story*, *Miss Saigon*. Regional Includes: American Repertory Theater, The Kennedy Center, Sacramento Music Circus, Kansas City Starlight, Lone Tree Arts Center. TV/Film: *Spinning Gold*, "The Gilded Age," "Last Week Tonight." @ericanthonyjohnson

KENWAY HON WAI K. KUA (*Ensemble*). Broadway: *Wicked*, *The Frogs* (OBC). National Tour: *Aladdin* (Omar u/s), *Mary Poppins*, *Flower Drum Song*. Regional: *The King and I* (Simon, Kralahome u/s), *9 to 5* (Dance Captain), *How to Succeed...*, *Waterfall*, *Cinderella*, *Pacific Overtures*, *Miss Saigon*. @kenwaykua

KATIE LOMBARDO (*Vacation Swing*) Broadway: *Beetlejuice*. Nat'l Tours: *Elf*, *Flashdance* (u/s Alex Owens). Regional: Broadway Sacramento, Ogunquit, TBTS, Engeman. TV/Commercial: *FBI Most Wanted*, *Aldo*, *DoorDash*, *Dave & Busters*. Love to the *Beetlejuice* team & family. Extra love to Mom, Dad, Emily, & Nathan. @ktlomb

MATEO MELENDEZ (*Ensemble*). *Beetlejuice The Musical* (Ensemble), National Theatre, Winter Garden, Marquis Theatre; *iLuminate's Artist of Light* (Lt. Bob/Bboy), Malaysia, Hong Kong, US Tour; *Newsies* (Ensemble), *Something Rotten* (Ensemble), Fulton Theatre, MSMT; *Newsies* (Ensemble), Broadway Sacramento. Much love to my family and friends!

DREW MINARD (*Ensemble*). Broadway: *The Music Man*. Tour: *Billy Elliot* (Billy). TV/Film: *Dispatchers From Elsewhere* and "The Tonight Show with Jimmy Fallon." Drew's solo show, *Catcher Suites*, recently premiered at Peregrine Theatre Ensemble, playing Holden Caulfield. Many thanks to his family and friends, CTG, and

Steve at 44 West! @drew.minard

LEE N PRICE (*Ensemble, u/s Beetlejuice, u/s Otho*) is ecstatic to be making his national tour debut! Lee is a recent graduate of Baldwin Wallace University's Music Theatre program. Endless love and gratitude to his family and friends, Jed and the KMR team, Telsey Office, and the *Beetlejuice* team. IG: @leeprice25

NEVADA RILEY (*Ensemble, u/s Lydia, u/s Girl Scout, u/s Miss Argentina*) made her Broadway debut in *Beetlejuice* and is super excited to be continuing her journey with the show on tour! BFA, University of Michigan. Many thanks to the *Beetlejuice* team, Telsey Office, Mom, Dad, Chris, and her gal pals. @nevada_riley

LEXIE DORSETT SHARP (*Swing, u/s Barbara, u/s Delia, u/s Maxine Dean, u/s Juno, u/s Miss Argentina*). National/International Tour: *School of Rock* (Rosalie), *Young Frankenstein* (Elizabeth), *Elf* (Emily), *The Addams Family* (u/s Morticia/ Alice/ Grandma). CCM graduate. Thanks ATB Talent, Amy Murphy Studio, Telsey Office, her friends and family. Big love to Jesse! LexieDSharp.com @lexiedorsetsharp

CORBEN WILLIAMS (*Ensemble*). *The Little Mermaid* (Dir/Choreo), *Smokey Joe's Cafe* (Asst. Dir.), *No Strings* (Asst. Choreo/Dance Supervisor) *Cinderella* (Ens), *The Music Man* (Ens), *Sister Act* (TJ), *Frozen* 'DCL' (Grand Pabbie), *Golden Mickey's* (Simba).

EDDIE PERFECT (*Music & Lyrics*) is an Australian composer, lyricist, playwright, musician, and performer. He was recently nominated for a Tony for Best Original Score for his work in *Beetlejuice*. His works for the stage include *Shane Warne the Musical* (Token Events), for which he won a Helpmann, a Green Room, and Victorian Premier's Literary Award; *Vivid White* and *The Beast* (Melbourne Theatre Company); *Strictly Ballroom* (Global Creatures); *Songs From the Middle* (with the Brodsky Quartet); and *King Kong* on Broadway (Global Creatures). Eddie's acting credits include *Offspring* (Ten), *South Pacific* (Opera Australia/Lincoln Center Theater), *Keating!* (Belvoir), and as a regular presenter on *Playschool*. He is currently playing Franklin Hart Jr. in the Australian production of *9 to 5*. Eddie dedicates *Beetlejuice* to his wife, Lucy Cochran, and her long lost mother, Mary.

SCOTT BROWN (*Book*) has made theatre things with Anthony King since high school; decades later, their two-man musical comedy *Gutenberg! The Musical!* (dir. Alex Timbers) scored Drama Desk, Lortel and Outer Critics Circle nominations. Scott also writes TV (HBO's "Sharp Objects", Hulu's "Castle Rock," WGN's "Manhattan," and novels (xL, Knopf). He won the George Jean Nathan Award for his theatre criticism at New York and spent many happy years at Entertainment Weekly. Infinite love to Robbie, Roger, Holland, and Robert, who made everything possible, and to

WHO'S WHO IN THE COMPANY

Katie, Zoe and Harry, who make everything worth it.

ANTHONY KING (*Book*) is an Emmy-nominated writer, producer, and performer who received a Tony nomination for his work on *Beetlejuice*. Off-Broadway: *Gutenberg! The Musical!* with Scott Brown (Lortel, OCC and Drama Desk nominations). TV: "The Afterparty" (Apple TV+), "Silicon Valley" (HBO), "Broad City" (Comedy Central), "Search Party" (HBOMax), "Woke" (Hulu), "Robbie" (Paramount+) and more. He also spent many years as the artistic director of the Upright Citizens Brigade Theatre in NYC. All the love in the world to his wife, Kate, and their daughters Eleanor and Lydia.

ALEX TIMBERS (*Director*) is the recipient of Tony, Golden Globe, Drama Desk, Outer Critics Circle and London Evening Standard awards, as well as two Obie and Lortel awards. Broadway: *Beetlejuice*; *Moulin Rouge!*; David Byrne's *American Utopia*; *Oh, Hello* with Nick Kroll and John Mulaney; *The Pee-wee Herman Show*; Disney's *Peter and the Starcatcher*; *Bloody Bloody Andrew Jackson* (also book writer). TV: "John Mulaney: Kid Gorgeous at Radio City" (Netflix), "Mozart in the Jungle" (Amazon). His debut picture book, *Broadway Bird*, set in an all-animal version of Broadway, was recently published by Macmillan. @alextimbers

CONNOR GALLAGHER (*Choreographer*). Broadway: *Beetlejuice*. Other: *The Robber Bridegroom* (Roundabout, Astaire Award); *Beauty and the Beast* (Disney Dream, Brass Ring Award); *Found* (Philadelphia Theatre Company); *Elf the Musical* (Kennedy Center); *The Twelve* (Denver Center); *Tangled* (Disney Magic, world premiere); and productions at The Public Theater, Shakespeare Theatre Company, A.C.T., Two River, Westport Country Playhouse, Goodspeed, TheatreWorks and Northern Stage. Connor is a graduate of CCM, where in 2021 he received the Young Alumni Award. Spent a year on Broadway as a dancing rug. www.connorgallagher.com, @connorga

KRIS KUKUL (*Music Supervision, Orchestrations & Incidental Music*). Recent work: *Sing Street* (Huntington), *In the Green* (Lincoln Center Theater), *David Byrne's Joan of Arc* (The Public Theater), *Head Over Heels* (Pasadena Playhouse), *Runaways* (City Center), Jeff Buckley's *The Last Goodbye* (The Old Globe), *The Heart of Robin Hood* (Royal Alexandra Toronto), *Songbird* (59E59), *Liz Swados Project* (Ghostlight Records). Williamstown Theatre Festival; resident music director 2005–2014. International work: Greek National Theatre, Epidaurus Festival, Edinburgh Fringe. Composer: *Camp Monster*, *Wing It!* (WTF), *Oliver Twist* (STNJ), *A Midsummer Night's Dream* (NTG). Adjunct faculty NYU/Tisch

DAVID KORINS (*Scenic Design*). Recent Broadway: *Hamilton* (Tony nom), *Beetlejuice*

(Tony nom) *Dear Evan Hansen*, *Mrs. Doubtfire*. TV: 94th and 91st Academy Awards, "Grease: Live!" (Emmy Award), *The Big Brunch*, *Last Week Tonight*. Creative director: *Immersive Van Gogh*, *Disney animation immersive experience*, *Hamilton: The Exhibition*, David Blaine, Bruno Mars, Lady Gaga, Kanye West, Mariah Carey, Andrea Bocelli. Dad: Stella and Vivian. @davidkorins

WILLIAM IVEY LONG (*Costume Design*). *Beetlejuice* is Mr. Long's 75th Broadway show! In addition to his countless design credits for television, film, opera and ballet, Mr. Long has won six Tony Awards, with 18 nominations. He was inducted into the Theater Hall of Fame in January 2006. williamiveylong.com

KENNETH POSNER (*Lighting Design*) designs extensively Off-Broadway, for resident theatres and for touring productions throughout the United States and internationally. His Tony nominated designs include *The Adventures of Tom Sawyer*, *Coast of Utopia* (Shipwreck), *Beetlejuice*, *Hairspray*, *Dirty Rotten Scoundrels*, *Pippin*, *Kinky Boots*, *Cinderella*, *Wicked*, *Outer Desert Cities*, and *The Merchant of Venice*. He has received Tony, Drama Desk, Outer Critics' Circle and Obie awards.

PETER HYLENSKI (*Sound Design*). Tony Award winner, Grammy and Olivier nominated. Selected designs: *Moulin Rouge!*, *Frozen*, *Anastasia*, *Beetlejuice*, *Once on This Island*, *Something Rotten!*, *King Kong*, *Rock of Ages*, *After Midnight*, *Motown*, *The Scottsboro Boys*, *Side Show*, *Rocky*, *Bullets Over Broadway*, *Shrek the Musical*, *On a Clear Day, Lend Me a Tenor*, *Elf*. Other: *Le Rêve* and *Lake of Dreams* at Wynn Las Vegas.

PETER NIGRINI (*Projection Design*). Broadway (selected): *MJ: The Musical*; *Ain't Too Proud*; *SpongeBob SquarePants: The Broadway Musical*; *Dear Evan Hansen*; *A Doll's House, Part 2*; *Am lie*; *An Act of God*; *Fela! Elsewhere: Man in the Ring* (Huntington Theatre); *Grounded* and *Here Lies Love* (The Public Theater); *Real Enemies* (BAM); Grace Jones' Hurricane tour; *Lucia di Lammermoor* (Santa Fe Opera); *Deep Blue Sea* (Bill T. Jones/Arnie Zane Dance).

MICHAEL CURRY (*Puppet Design*) is the founder of Michael Curry Design, a world leader in character and concept design. Michael's designs for Cirque du Soleil, Metropolitan Opera, Disney Theatrical (*The Lion King*, *Frozen*) and Olympics opening ceremonies have gathered multiple awards. Michael works with his long-term team in Portland, Oregon, continuing innovations in visual effects and puppetry.

JEREMY CHERNICK (*Special Effects Design*) has worked on 50-plus Broadway productions: *MacBeth*, *Search for Signs...*, *Clyde's*, *Hadestown*, *Oklahoma!* Jeremy worked with Disney Theatrical Group creating effects for *Beauty and the Beast*,

WHO'S WHO IN THE COMPANY

Frozen, Aladdin, Hunchback... and Tarzan. West End: *Harry Potter and the Cursed Child*, *Let the Right One In*. Emmy Award honoree for work on NBC's *Jesus Christ Superstar Live!* (2018). Jeremy serves as head designer for J&M Special Effects in Brooklyn. jmfxf.net

MICHAEL WEBER (*Magic & Illusion Design*). Weber's magic has appeared in Broadway productions including *Angels in America*, *The Year of Magical Thinking*, *Faustus*, *In and of Itself*, *On the Stem*, *Ricky Jay and His 52 Assistants*, *Rogue's Gallery* and *Topdog/Underdog*. Film: *Forrest Gump*, *Oceans 13*, *Serpent and the Rainbow*, *Sneakers*, *The Illusionist*, *The Parent Trap*, *The Prestige*, and *Wolf*.

CHARLES G. LaPOINTE (*Hair & Wig Design*). Broadway, touring, West End and international productions including *Hamilton* (Make-Up Artists & Hair Stylist Guild Award), *MJ*, *The Cher Show* (Drama Desk Award), *The Band's Visit*, *Beautiful: The Carole King Musical*, *Ain't Too Proud*, *Beetlejuice*, *SpongeBob SquarePants: The Broadway Musical* (Drama Desk Award), *Jersey Boys*, *Anastasia*. TV: "The Wiz" (Emmy Award nomination), "Jesus Christ Superstar Live!" (Emmy Award nomination/Make-Up Artists & Hair Stylist Guild Award).

JOE DULUDE II (*Make-up Design*). Broadway, Off-Broadway and West End: *Wicked*, *KPOP*, *Beetlejuice*, *MJ the Musical*, *SpongeBob SquarePants: The Broadway Musical*, *Anastasia*, *Sunday in the Park with George*, *Torch Song Trilogy*, *Beautiful: The Carole King Musical*, etc. Film: *Black Flame*, *Don't Look Up*, *Ghostbusters*. TV: "Jesus Christ Superstar Live!" (Emmy nomination), "Annie Live!", "Julia," "SpongeBob Live on Stage," "The Gilded Age," "Castle Rock." Joedulude2.com, @dulude2

CATIE DAVIS (*Associate Director*). Broadway: *Beetlejuice*, *Moulin Rouge!*, *Company*. Other associate: *Ben Platt Live from Radio City Music Hall* (Netflix), *The Public Theater*, *Roundabout*. Catie directs and develops new contemporary musical theatre. catie-davis.com @catie-davis

MICHAEL FATICA (*Associate Choreographer*) has served on the choreography teams for *Beetlejuice* (Broadway), *Matilda* (International Tour) and the Radio City New York *Spring Spectacular*. His own work can be seen on Celebrity and Norwegian Cruise Lines and in the immersive burlesque show *Speakeasy* in midtown Manhattan. Broadway veteran of 7 shows. @michaelfatica

LORENZO PISONI (*Physical Movement Coordinator*). Broadway: *Beetlejuice*, *Almost Famous*, *MJ*, *Gary*, *Frozen*, *Noises Off*. As an actor, Lorenzo's work on and off Broadway has been recognized with Drama Desk, Lucille Lortel, Obie and Outer Critics Circle awards. @lorenzopisoni

DAVID DABNON (*Dance Arrangements*). Emmy nomination: *Eat Sh*t, Bob!* (composer). Broadway: *Funny Girl* (additional dance arrangements), *Disaster!* (dance arranger). *HBO's Six by Sondheim* (arranger). Orchestrator: Audra McDonald's *Sing Happy, Go Back Home*. Graduate of the Hartt School and Carnegie Mellon University.

MATT STINE (*Music Producer*) is a Tony Award-winning orchestrator, two-time Grammy-nominated music producer and a Drama Desk, Lucille Little and Outer Critics Circle Award-nominated sound designer. Credits: *KPOP*, *Moulin Rouge!*, *Once Upon A One More Time*, *Assassins* (CSC), *Sweeney Todd* (Barrow Street), *Here Lies Love* (The Public Theater). 27sound.com

KRISTY NORTER (*Music Coordinator*) is a freelance musician and Music Coordinator. Her Coordinator credits include: *Some Like It Hot*, *SIX*, *New York New York*, *Back to the Future*, *SIX* National Tours, *Merrily We Roll Along*, *Mr. Saturday Night*, *Cyrano*, *Black No More*, *The Harder They Come*, and *SUFFS*.

MIDIOMATIC, LLC (*Keyboard Programmer*) features electronic music design from Taylor Williams, Dana Haynes, and Ethan Deppe. Credits include *King Kong*, *Be More Chill*, *Frozen*, *Moulin Rouge!*, *The Prince of Egypt*, *Lempicka*, *Griswold's Broadway Vacation*, *Trading Places*. midiomatic.com

ANDY GROBENGIESER (*Music Director/Conductor*). Thanks to Eddie, Kris, Howie, and Alex for this one. Broadway: *Aladdin*, *King Kong*, *Groundhog Day*, *Ghost*, *The Little Mermaid*, *Lestat*. National Tour: *Peter and the Starcatcher*, *Shrek The Musical*, *The Lion King*. B.M., Millikin University; M.M., UT-Austin. More at grobmiex.com.

ALLIED GLOBAL MARKETING (*Tour Marketing & Press*) is an integrated marketing agency working with the world's largest entertainment, sports, consumer, and lifestyle brands, including 80+ Broadway shows over 25 years. Current tours: *Ain't Too Proud*, *The Book of Mormon*, *Funny Girl*, *Hadestown*, *The Hip Hop Nutcracker*, *Mamma Mia!*, *Mean Girls*, *Mrs. Doubtfire*, *Pretty Woman*, *Wheel of Fortune LIVE!* Upcoming tours: *Back to the Future*, *The Kite Runner*, *Peter Pan Goes Wrong*, *Some Like It Hot*.

THE TELSEY OFFICE (*Casting*). With offices in both New York and Los Angeles, The Telsey Office casts for theater, film, television, and commercials. The Telsey Office is dedicated to creating safe, equitable, and anti-racist spaces through collaboration, artistry, heart, accountability, and advocacy.

JOEL T. HERBST (*Company Manager*). Go Goslings!

HILLARY SMITH (*Assistant Company Manager*) couldn't be happier traveling the

WHO'S WHO IN THE COMPANY

country with *Beetlejuice the Musical*. Most recently she has spent time as the After School Program Director at Applause NY and the Director of Education at The Broadway Collective. Love to Ryan, Mom and Dad, and thanks to Joel!

ALAND KNIGHT (*Production Stage Manager*). National Tour: *Jesus Christ Superstar*, *Charlie and the Chocolate Factory*, *Les Misérables*, *The Sound of Music*, *Mamma Mia!*, *The Book of Mormon*, *Sister Act the Musical*. Lots of love to his family back in Michigan!

STEPHANIE HALBEDEL (*Stage Manager*). National Tour: *Jesus Christ Superstar*, *Miss Saigon*, *Les Misérables*, *The Phantom of the Opera*, *Dirty Dancing*, *Blue Man Group*. For my all-things-spooky sister Sarah.

LESLIE S. ALLEN (*Assistant Stage Manager*). National Tour: *Pretty Woman...* (1st National); *Barney: Let's Go Live!*; Kelly Clarkson's *Addicted*; George Strait, 2007. Regional: Philadelphia Theatre Company, Dallas Theater Center, Walnut Street Theatre, Dallas Children's Theater. Dedicated to my mentor Claude File. Thank you to family and friends for love and support.

GENTRY & ASSOCIATES (*General Management*) has managed nearly 250 national and international touring theatrical productions over the past 25 years. Current and upcoming productions include *Beetlejuice*, *The Book of Mormon*, *Come From Away*, *Funny Girl*, *Les Misérables*, *Mean Girls*, *Peter Pan*, and *To Kill a Mockingbird*.

JENNY GERSTEN (*Line Producer*) loves to produce. Producer of musical theatre at New York City Center, interim artistic director at the Williamstown Theatre Festival, at sea she's the creative producer for Virgin Voyages. Other producing projects include *The Outsiders* (with American Zoetrope) and *Born for This*. Boards: Ballet Tech, The Debate Society, The Mercury Store.

MARK KAUFMAN (*Executive Producer*). As executive vice president, Warner Bros. Theatre Ventures, Kaufman produced the West End, Broadway, first national tour and Australian production of the Olivier Award-winning musical *Charlie and the Chocolate Factory* and the Broadway stage adaptation of Stephen King's *Misery* starring Bruce Willis and Laurie Metcalf, as well as the Tony Award-winning *The Curious Incident of the Dog in the Night-Time*. Recent and upcoming projects include *Dave* (Arena Stage), *17 Again* (NAMT), *Dog Day Afternoon* and *A Star Is Born*. Before joining WBThV, Kaufman oversaw the Broadway productions of *Hairspray*, *The Wedding Singer* and *Elf* for New Line Cinema. Kaufman executive produced the New Line films *Secondhand Lions*, *Hairspray*, *Four Christmases*, *17 Again* and *My Sister's Keeper* and co-produced *Valentine's Day*. Kaufman wrote *Toothless* for

ABC's *Wonderful World of Disney* and *Just a Walk in the Park* for ABC Family. Love to Stacey, Ethan, Spencer and Victoria.

LANGLEY PARK PICTURES (*Executive Producer*). Kevin McCormick serves as executive vice president production at Warner Bros. Pictures. (Formerly president of production, leaving in 2010 to start Langley Park Pictures). Kevin oversees many films, including *Dune 2*, *Furiosa*, *The Wise Guys*, and *The Back Nine* for HBOMax. Kevin is also an executive producer on the Broadway hit shows *Beetlejuice* and *Charlie and the Chocolate Factory* and remains a senior advisor to Warner Bros. Theatre Ventures division.

MIMI INTAGLIATA (*Executive Producer*) (she/her) has spent 30+ years working in theatrical production as a Stage Manager, Production Manager, and Producer. Credits: Director of Production Operations, Disney Theatrical Group - *Beauty and the Beast* (Shanghai Disneyland Resort), *Frozen* (Broadway), *Newsies the Musical* (national tour, theatrical film), *The Lion King* (Rafiki tour), developmental productions of *The Hunchback of Notre Dame* and *Shakespeare in Love*. Director of Production, Paper Mill Playhouse - over 40 productions including the World Premiere of *Newsies the Musical*, the North American premiere of the 25th Anniversary tour of *Les Misérables* (in partnership with NETWORKS). Production Manager, *The Dodgers - 42nd Street* (Broadway/Tour), *Urinetown* (Broadway/Tour), and *Bare: A Pop Opera* (original off-Broadway), among others. She and her wife, Alicia Duran, are proud parents of their two children, Celeste and Lucas.

WARNER BROS. THEATRE VENTURES (*Producer*) is thrilled to be returning to Broadway with *Beetlejuice*. Theatre Ventures develops and produces first-class musicals and stage productions from the company's expansive catalogue. WBThV was previously represented on the West End, Broadway, Australia and currently on the national tour by Olivier Award-winning musical *Charlie and the Chocolate Factory*, the Broadway stage adaptation of Stephen King's *Misery* starring Bruce Willis and Laurie Metcalf and by the Tony Award Best Play winner *The Curious Incident of the Dog in the Night-Time*. Other Broadway credits include Tony Award-winning musical *The Bridges of Madison County*, and the holiday hit *Elf*. The division is developing productions of *Dave* (Arena Stage), *17 Again* (NAMT), *Dog Day Afternoon* and *A Star Is Born*. Additionally, we oversee and serve as creative consultants on the licensing of third-party stage rights to various properties held within the Studio's vast media library such as the upcoming *Broadway Vacation* and *Mr. Saturday Night*.

NETWORKS PRESENTATIONS (*Producer*) is an industry-leading producer of touring theatrical productions, committed to delivering quality

entertainment to audiences worldwide for more than 25 years. Current and upcoming productions include *Beetlejuice*, *The Book of Mormon*, *Come From Away*, *Funny Girl*, *Les Misérables*, *Mean Girls*, *Peter Pan* and *To Kill a Mockingbird*. networkstours.com

JEFFREY RICHARDS (*Producer*) is delighted to continue his association with *Beetlejuice* and is happy to collaborate again with Orin Wolf and NETWORKS Presentations, who have been the producing partners on the acclaimed National Tour of *Fiddler on the Roof*. Broadway producing musical credits include: *Spring Awakening* (Tony Award winner-Best Musical), *Hair* (Tony Award winner-Best Musical Revival), *The Gershwins Porgy and Bess* (Tony Award winner-Best Musical Revival), and *The Bridges of Madison County*. Upcoming: *Maybe Happy Ending* – “the futuristic musical that the theatre has been waiting for” (Broadway’s Best Shows).

STEVE TRAXLER (*Co-Producer*) co-founded and served as CEO/President of Jam Theatricals for 25 years, selling the company at the end of 2019. During that time, he produced over 60 shows on Broadway earning 13 Tony Awards, multiple national tours, and several West End productions—as well as overseeing the revitalization of the National Theatre in Washington DC hosting pre-Broadway productions of *If/Then*, *Mean Girls* and *Beetlejuice*.

REBECCA GOLD (*Producer*). Numerous awards on Broadway (*Porgy and Bess*, *All the Way*) and off (*Sleep No More*, *Sweeney Todd*). Committed to bringing provocative and innovative work to audiences, she is extensively supportive of not-for-profit theatre.

JAMES L. NEDERLANDER (*Producer*). President of Nederlander Organization. Credits: *Mr. Saturday Night* starring Billy Crystal, *Tina—The Tina Turner Musical*, *The Lehman Trilogy*, *To Kill a Mockingbird*, *The Band’s Visit*, *On Your Feet!*, *My Fair Lady*, *The Elephant Man*, and many others.

WARNER CHAPPELL MUSIC (*Producer*) is the global music publishing company of Warner Music Group and home to legendary songwriters including *Eddie Perfect*. With worldwide offices, Warner Chappell provides deep expertise and innovative opportunities for its songwriters.

deROY FEDERMAN PRODUCTIONS/ 42ND. CLUB (*Producers*). Jamie deRoy: Ten Tony Awards, 150-plus Broadway and Off-Broadway shows. Wendy Federman: Thirteen Tony Awards, two Olivier Awards. 42nd.club: Principals include Phil Kenny and Diego Kolankowsky.

MARY LU ROFFE (*Producer*). Three-time Tony Award winner, has been producing on Broadway, London and national tours for 30 years. Love *Beetlejuice*. It’s showtime!!!!

MARC BELL & JEFF HOLLANDER (*Producers*). Marc is a two-time Tony Award

winner (*Jersey Boys* and *August: Osage County*). Jeff makes his Broadway producing debut with *Beetlejuice*.

THE JOHN GORE ORGANIZATION (*Producer*) family of companies includes Broadway Across America and Broadway.com, under the supervision of 15-time Tony-winning producer John Gore (chairman and CEO). BroadwayAcrossAmerica.com Broadway.com

RUTH & STEVE HENDEL (*Producers*). Broadway: *Fela!* Current tours: *Mean Girls*, *The Band’s Visit*, *Ain’t Too Proud*. Upcoming: *A Walk on the Moon*, *Macbeth*. Stephen (films): *Finding Fela!*, *Neptune Frost*.

GABRIELLE PALITZ (*Producer*). Nineteen critically acclaimed shows including *Ain’t Too Proud*, *All the Way* (Tony), *Bandstand*, *The Prom*, *Thoughts of a Colored Man*, *American Son*, *Lady Day*.... Proud Second Stage trustee.

PIERCE FRIEDMAN PRODUCTIONS (*Producer*). Tommy Pierce and Harry Friedman have been involved in entertainment since the late 60s. This wonderful, irreverent production is a perfect continuation of their adventure.

OPENING NIGHT DECEMBER 7, 2022

**STAFF FOR
BEETLEJUICE**

EXECUTIVE PRODUCERS

Mark Kaufman Kevin McCormick
Mimi Intagliata

GENERAL MANAGEMENT

ENTRY & ASSOCIATES

Gregory Vander Ploeg

Madeline McCluskey Steven Varon-Moore
Heather Moss

PRODUCTION MANAGEMENT

NETWORKS PRESENTATIONS

Jason Juenker

Hector Guivas Shelby Stark Walker White pesci

TOUR MARKETING AND PRESS

ALLIED GLOBAL MARKETING

Andrew Damer

Jennifer Gallagher Scott Praefke

Jessica Cary Adina Hsu Amenkha Sembenu

Jessica Steans-Gail Emily Toppen Anne Waisanen

CASTING

THE TELSEY OFFICE

Rachel Hoffman, CSA

Rashad Naylor

Priya Ghosh Domonique Aviles

EXCLUSIVE TOUR DIRECTION

THE ROAD COMPANY

Stephen Lindsay Brett Sirota

trc.nyc

Production Stage Manager Alan D. Knight
Stage Manager Stephanie Halbedel
Assistant Stage Manager Leslie S. Allen
Company Manager Joel T. Herbst
Assistant Company Manager Hillary Smith
Production Supervisor Stage Manager Rachel Bauder,
Matt Bur
Assistant Director Hunter Bird
Assistant Choreographer Nancy Renee Braun
Associate Scenic Design Rod Lemmond
Assistant Scenic Design Justin West
Associate Costume Design Paul Spadone

Assistant Costume Design Savannah Wetzel
 Costume Assistant Dorothy Johnston
 William Ivey Long Studio Director Donald Sanders
 Costume Coordinator Kaitlyn Fae Barrett
 Associate Hair and Wigs Nicholas Parrish
 Assistant Make-up Tishonna Ferguson
 Associate Lighting Design Joel Shier
 Assistant Lighting Design Samuel J. Biondillo
 Moving Light Programmer David Arch
 Associate Sound Design Justin Stasiw
 Associate Special Effects Design Megan Lang
 Associate Projection Design Kate Ducey
 Projection Animator Lacey Erb
 Projection Programmer Daniel Scully
 Head Carpenter Ashton Hill
 Assistant Carpenter Ryan Coon
 Flyman Preston Speaker
 Head Electrician Michael Latocha
 Assistant Electricians Price Foster, Jeremy Phelps
 Head Audio Cory Raynor
 Assistant Audio Madox Herwig
 Head Props Caitlin Kucera
 Assistant Props Kate Hart
 Head Wardrobe Kaitlyn Barrett
 Assistant Wardrobe Emily Staloch
 Hair and Wigs Supervisor Brittany Steele
 Assistant Hair & Make-up Jakey Hicks
 Crew Swing Cara Stone
 Production Electricians Olivia R. Doniphan, Justin Petito
 Production Sound Heather Augustine, Mason Wiscup
 Production Video Chelsea Zalukowski
 Production Properties Dan Brown
 Keyboard and Synthesizer Programmer
 Midimatic, LLC/Taylor Williams/Dana Haynes/Ethan Deppe
 Touring Physical Therapist Claire Rhode
 Physical Therapy NEURO TOUR Physical Therapy, Inc.
 Production Assistants Carson Gantt,
 Rodrigo Esquivel Herrera, Emily Huber, Westin Hicks
 Safety Consultant Bryan Huneycutt
 Production Photography Murphymade
 Video Services HMS Media
 Creative Services SpotCo
 Website Services/Design SpotCo
 Merchandise The Araca Group
 Merchandise Manager Jessica Johnson, Brian Gray
 Accounting Networks Presentations LLC
 Legal Services F. Richard Pappas, Esq.
 HR Services Global Solutions, Inc.,
 K+K Reset, LLC
 Housing Road Rebel
 Travel Agency Janice Kessler,
 Carlson Wagonlit Travel
 Trucking Clark Transfer

FOR NETWORKS PRESENTATIONS

Chief Executive Officer Orin Wolf
 Chief Financial Officer Margaret Daniel
 Chief Operating Officer Scott W. Jackson
 Chief Producing Officer Seth Wenig
 Executive Producers Mimi Intagliata, Trinity Wheeler
 Associate Producer Hannah Rosenthal
 Executive Assistant Isabella Schiavon
 Sr. Director/Finance John Kinna
 Controller Jennifer Gifford
 Director of Tour Accounting Laura S. Carey
 Tax Director Pat Guerieri
 Associate Tax Accountant Kim Ngan Tran
 Sr. Director/Booking and Engagements Mary K. Witte
 Director, Booking and Engagements Colin Byrne
 Engagement Manager Stacey Burns
 Director of Sales Zach Stevenson
 Director of Marketing Heather Hess
 Sr. Director/General Management Gregory Vander Ploeg
 General Managers Madeline McCluskey,
 Steven Varon-Moore
 Associate General Manager Heather Moss
 Sr. Director/Production Management Jason Juenker

Sr. Production Manager Hector Guivas
 Production Managers Shelby Stark, Walker White
 Technical Director pesci
 Director of Operations Pearce Landry-Wegener
 Resource Director Kayla Rooplal
 Operations Manager Catherine Logan Blonar
 Office Assistant Lisa Loveless
 Music Coordinator John Mezzo
 Warehouse Manager Joseph Spratt
 Warehouse Costume Manager Bobby Maglaughlin

MUSIC CREDITS

“Day-O (The Banana Boat Song)” Written by Irving Burgie and William Attaway. Published by BMG Gold Songs (ASCAP) obo Caribe Music (ASCAP) and Reservoir Media Music (ASCAP) Reservoir Media Management, Inc. Used by permission. All rights reserved.
 “Jump in the Line” by Harry Belafonte, Ralph de Leon, Gabriel Oller and Steve Samuel. Published by Clara Music Publishing Corp. (ASCAP). Administered by Next Decade Entertainment, Inc. All rights reserved. Used by permission.

CREDITS

Scenery and scenic effects built, painted, and electrified by Great Lakes Scenic Studios. Show Control and Scenic Motion Control featuring STAGE COMMAND SYSTEMS® by PRG Scenic Technologies, a division of PRG Broadway L.L.C., New Windsor, New York. Lighting equipment and special lighting effects by PRG Lighting. Sound equipment by Masque Sound. Video by PRG Video. Puppets by Symbolic Arts, Jerard Studios, Castelli Models, BB Props, Landmark Creations, and Sam Barnett at Silicone Sound. Props by Bad Monkey Props, Jerard Studio, R Ramos Upholstery, Tom Carroll Scenery, Barrington Broly, Colonial Braided Rug, Dapper Cadaver, Austin Rodriguez, Rob McFadyen, Arin Pounov, Danielle Moyal, and M Picciuto. Costumes made by Jennifer Love Costumes; Euroco Costumes, Inc.; Felsen Tailors; Gilberto Designs; Rachel Ralby; Panzai Boutique; David Dalrymple Studio. Millinery by Arnold S. Levine, Inc. Gloves by Wing & Weft Gloves. Custom fabric painting and printing by Jeff Fender Studio, Dyanamix Inc., Juliann E. Kroboth. Rehearsed at New 42 Studios, New York City.

MAKEUP PROVIDED BY MAC



SPECIAL THANKS TO

Devin Keudell and Michael Demniak, Bespoke Theatricals
 The Carson Center, Paducah, KY,
 Mary E. Katz, Executive Director
 Insurance Broker Services
 Maury Donnelly and Parr, Inc.
 Robert B. Middleton, Sr and Meghan Coleman
 Financial Services and banking arrangements by
 Flagstar Bank N.A.

Online: BeetlejuiceBroadway.com

Facebook, Instagram, X, TikTok: BeetlejuiceBwaw



The Actors and Stage Managers employed in this production are members of Actors' Equity Association, the union of professional actors and stage managers in the United States.



All stage work performed by employees represented by IATSE.



UNITED SCENIC ARTISTS represents the designers and scenic painters for the American Theatre.



The Musicians employed in this production are members of the American Federation of Musicians of the United States and Canada.



The Director and Choreographer are members of the Stage Directors and Choreographers Society, an independent national labor union.



The Press Agents, Company and House Managers employed in this production are represented by the Association of Theatrical Press Agents & Managers.



This production is produced by a member of The Broadway League in collaboration with our professional union-represented employees.

CC CREASY WOOLFOLK CONCEPTS

PUBLIC RELATIONS

&

COMMUNITY ENGAGEMENT

Let us be **your strategic partner** in **crafting compelling narratives and building meaningful connections.**

With a passion for storytelling and a commitment to excellence, we specialize in delivering results-driven PR solutions tailored to your unique needs.

- MEDIA AND PRESS RELATIONS
- BRAND DEVELOPMENT
- REPUTATION MANAGEMENT
- COMMUNITY ENGAGEMENT
- CREATIVE SERVICES

Cindy@CreasyWoolfolkConcepts.com

CreasyWoolfolkConcepts.com



STEPHANIE CLARK

— REAL ESTATE —

PULL BACK THE CURTAIN
ON OUR AMAZING SERVICE!

Let us help you buy or sell your next home.



PERRIN DUVALL

REALTOR®

757-284-6205



STEPHANIE CLARK

REALTOR®

757-472-9484

StephanieClarkRealEstate.com

RE/MAX ALLIANCE

Each Office Is Independently Owned and Operated.



GOOD MORNING GREAT NEWS

WTKR News 3
This Morning



Join Jessica and Blaine
Weekdays at 6am

NEDERLANDER NATIONAL MARKETS LLC

N A NEDERLANDER PRESENTATION

James L. Nederlander
President



NEDERLANDER

Nick Scandalios
Chief Operating Officer

Jack Meyer
Vice President, Programming

Suzanne Bizer
Sr. Vice President, NNM

<i>Vice President of Nederlander National Markets</i>	Michelle Bjelke
<i>VP of Marketing</i>	Brian Vogler
<i>VP of Programming</i>	Scott Sampson
<i>Sr. Director of Programming</i>	John McCall
<i>Director of Accounting</i>	Jill Hilty
<i>Director of Operations</i>	Deanna Gonzalez
<i>Sr. Marketing Manager</i>	Micah McDade
<i>Regional Marketing Manager</i>	Ashley Gibson
<i>Marketing Manager</i>	Emma Faulkner
<i>Season Ticket Services Manager</i>	Jose Virgen
<i>Operations & Event Associates</i>	Sophia Danielle-Grenier, Eric DesNoyers, Meredith Maiorana
<i>Operations Administrator</i>	Emily Lloyd
<i>Staff Accountant</i>	Lisa Matthews
<i>Graphic Designer/Web Developer</i>	Steven Crissey
<i>On-site Management</i>	Harold Hanson, Josh Weckesser, Mickey Mulcahy, Chris Holman, Nicholas Broussard

The name “Nederlander” has been synonymous with great entertainment since 1912. A show business dynasty began when David T. Nederlander, a smart young businessman living in Detroit Michigan, purchased a 99-year lease on the Detroit Opera House. In 1964, his son James M. Nederlander came to New York City and purchased the Palace Theatre on Broadway. His hard work, pioneering spirit and vision enabled him to build one of the largest privately held live entertainment companies in the world, including theaters in 32 cities across the United States and theaters in London.

Nederlander National Markets, a Nederlander Presentation based in Chicago, is one of the largest presenters of Broadway series and engagements across North America. Currently, they oversee subscription seasons in more than 20 cities throughout the country.

Nederlander continues the tradition of operating historic theatres, producing and presenting the best in theatrical and concert events, and innovating new ways to engage future generations of theatergoers.

"THE
**FUNNIEST
MUSICAL**
OF ALL TIME."

Entertainment

THE BOOK OF
MORMON



TICKETS ON SALE DECEMBER 15!

MAY 10-12 • CHRYSLER HALL

BROADWAYINNORFOLK.COM

BROADWAY★NORFOLK

A NEDERLANDER PRESENTATION

**BRING A GROUP OF
10+ AND SAVE!**

EMAIL GROUPSALES@SEVENVENUES.COM TO BOOK



Seven Venues

The Hip Hop Nutcracker
7:30 PM • Thursday, December 28
Chrysler Hall



Harry Potter and the Sorcerer's Stone™ In Concert
7:30 PM • Friday, March 22
Chrysler Hall



Black Violin
The Experience Tour
7:30 PM • Sunday, April 7
Chrysler Hall



The Piano Guys
7:30 PM • Thursday, April 25
Chrysler Hall

Attucks Theatre • Chrysler Hall • Harbor Park • Harrison Opera House • Scope Arena • Wells Theatre

Tickets available at the Scope Arena box office and Ticketmaster.com.
Visit SevenVenues.com for more information.



**Norfolk
Collegiate**

A GREAT EDUCATION.
AN EVEN BETTER EXPERIENCE.

STUDENT-FOCUSED UNLIMITED POSSIBILITIES

Through challenging academics, project-based and experiential learning opportunities, Norfolk Collegiate students think globally, work collaboratively & follow their passions in a safe, supportive community.

- AP Capstone® Program
- College Counseling Program
- Competitive Athletics
- Community Service
- Design Thinking & Computing
- Fine & Performing Arts
- Engaging Advisory Program
- Learning Resource Program
- Leadership Opportunities
- LEAP Term
- Self & Global Awareness Programs
- Student-Led Clubs
- Student-Led Diversity Initiatives



TAKE THE NEXT STEP!

Apply today at
NorfolkCollegiate.org
or scan the QR code
to get started.



Access Virginia is a non-profit organization that was created to provide accessibility to live theatrical performances for persons with hearing and vision loss.



*Text displayed on an LED board
operated by a captioner.*



*Narration of the visuals by an
audio describer.*

**Giving the gifts of sight and sound.
Now you can enjoy Broadway and
live performances!**

You can help us continue to open doors for persons with hearing and sight loss to attend live theater and to ensure that no individual with these disabilities is denied access or treated differently than other individuals because of absence of necessary accommodations.



SCAN ME

Simply scan the QR code to donate. Thank you for your generosity!!

Visit www.AccessVirginia.info for a list of theaters where services are provided.



@accessvirginia

ADVERTISE IN THIS PROGRAM BOOK!



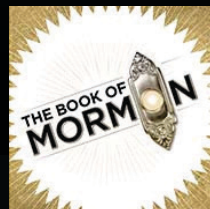
**TO KILL A
MOCKINGBIRD**
JAN 30-FEB 4, 2024
RESERVE BY 12/22



SIX
FEB 27-MAR 3, 2024
RESERVE BY 1/23



HADESTOWN
MAR 26-31, 2024
RESERVE BY 2/20



**THE BOOK
OF MORMON**
MAY 10-12, 2024
RESERVE BY 4/5

YOUR AD. HANDLED DIRECTLY TO YOUR AUDIENCE.

Be part of an exclusive group of community organizations who know that program book advertising is a **proven way to get targeted messaging into the right hands**. Theater experiences are emotionally charged and memorable. By **associating your brand with the magic of live performances**, you'll create a lasting impression that resonates beyond the theater walls.

WE CAN DESIGN YOUR AD FOR FREE!

DISCOUNTS AVAILABLE WHEN YOU RESERVE THE ENTIRE BROADWAY SEASON.

Reserve your ad today: INFO@VIRGINIAPRINT.COM